

Cultivating the Next Generation of Academic Leaders: Hartford Doctoral Fellows Program



GERIATRIC SOCIAL WORK INITIATIVE

NADD Spring Meeting

Asheville, NC

April 12, 2014

James Lubben¹

Megumi Inoue¹

Linda Harootyan²

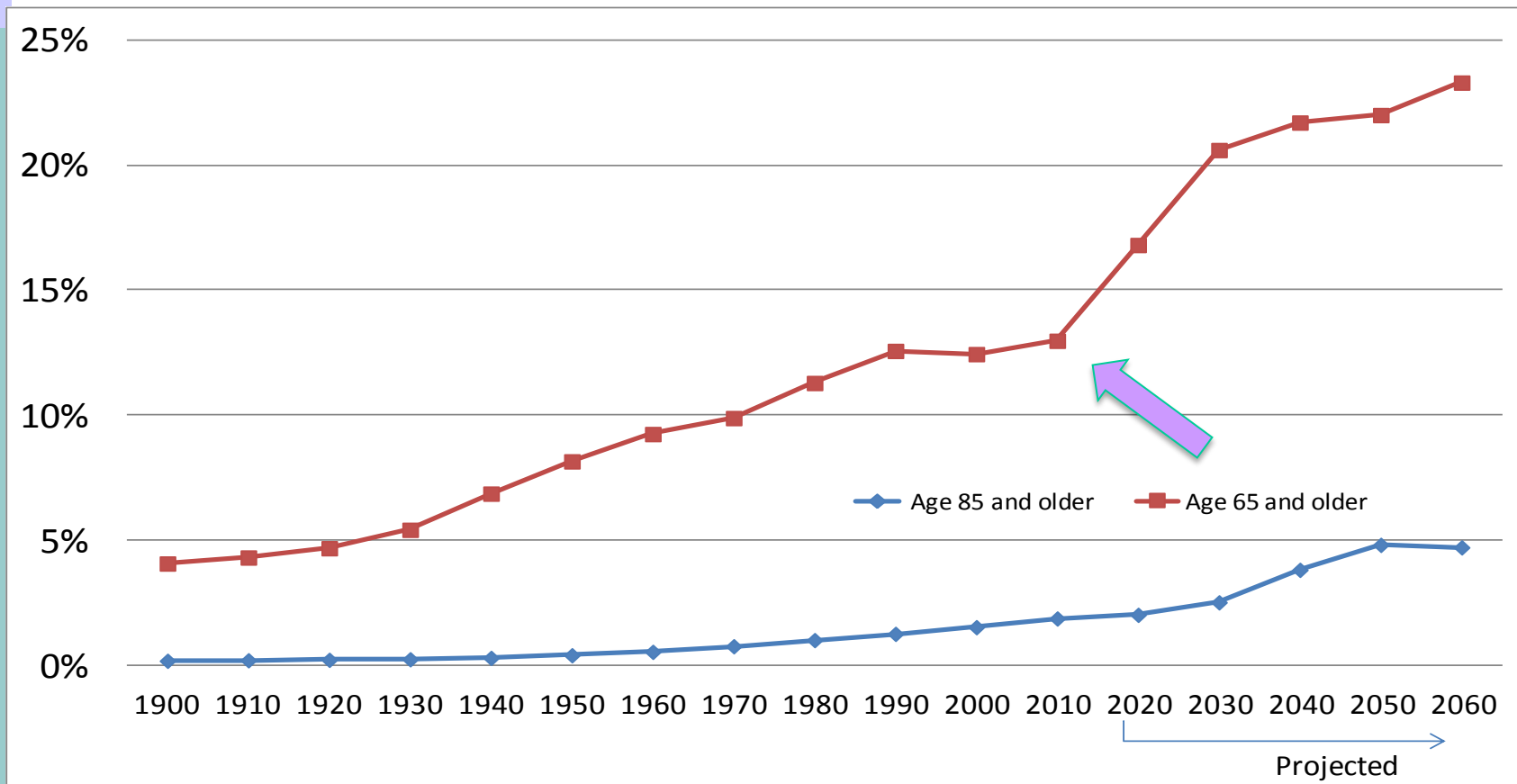
¹ Boston College

² Gerontological Society of America





U.S. Older Population as a Percentage of the Total Population: 1900 - 2060



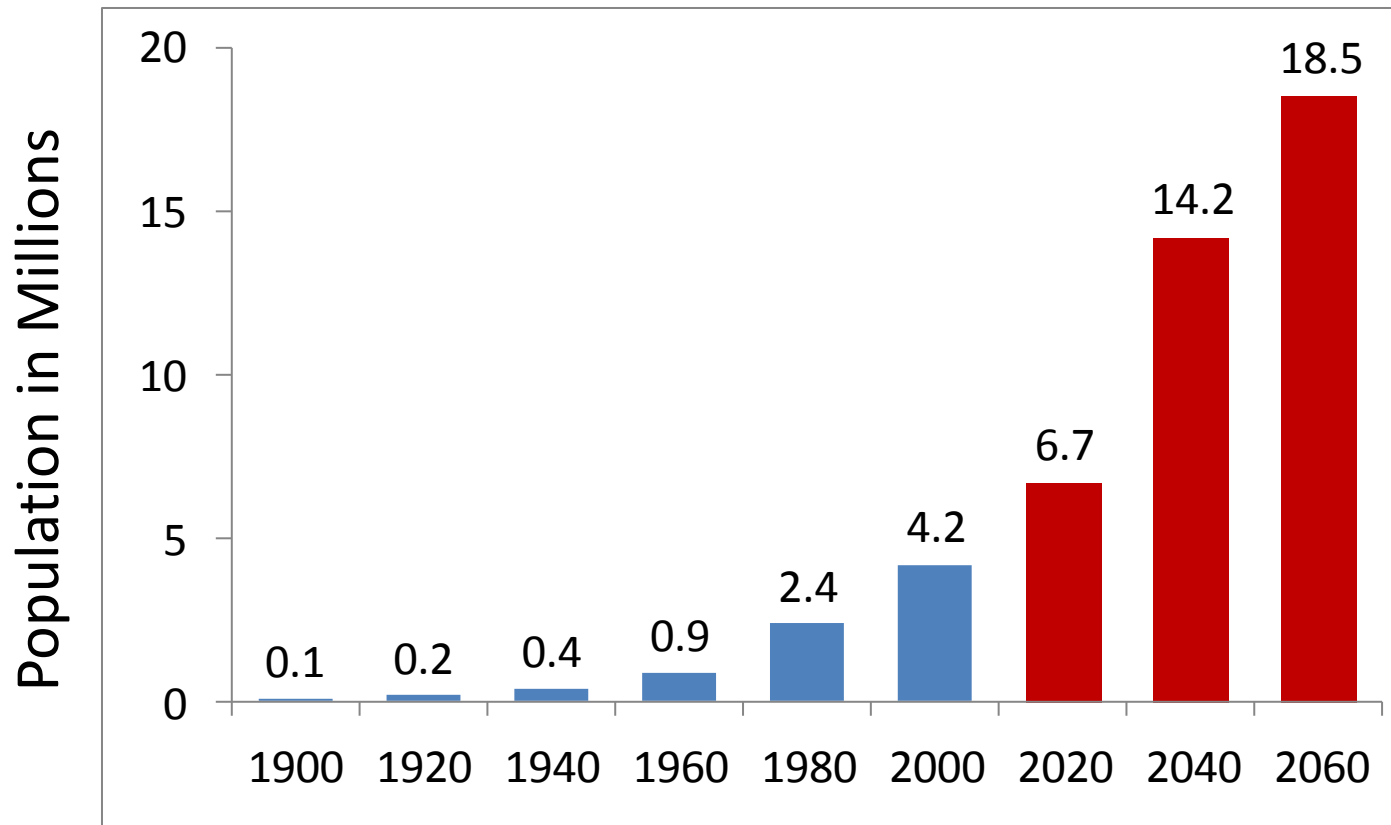
Sources:

U.S. Census Bureau. (2008). The 2008 national population projections. Retrieved June 19, 2013, from <http://www.census.gov/population/projections/data/national/2008/summarytables.html>.

U.S. Census Bureau. (2012). 2012 National population projections. Retrieved June 19, 2013, from <http://www.census.gov/population/projections/data/national/2012/summarytables.html>



U.S. Population 85 and Older: 1900–2060 Census Data & Projections



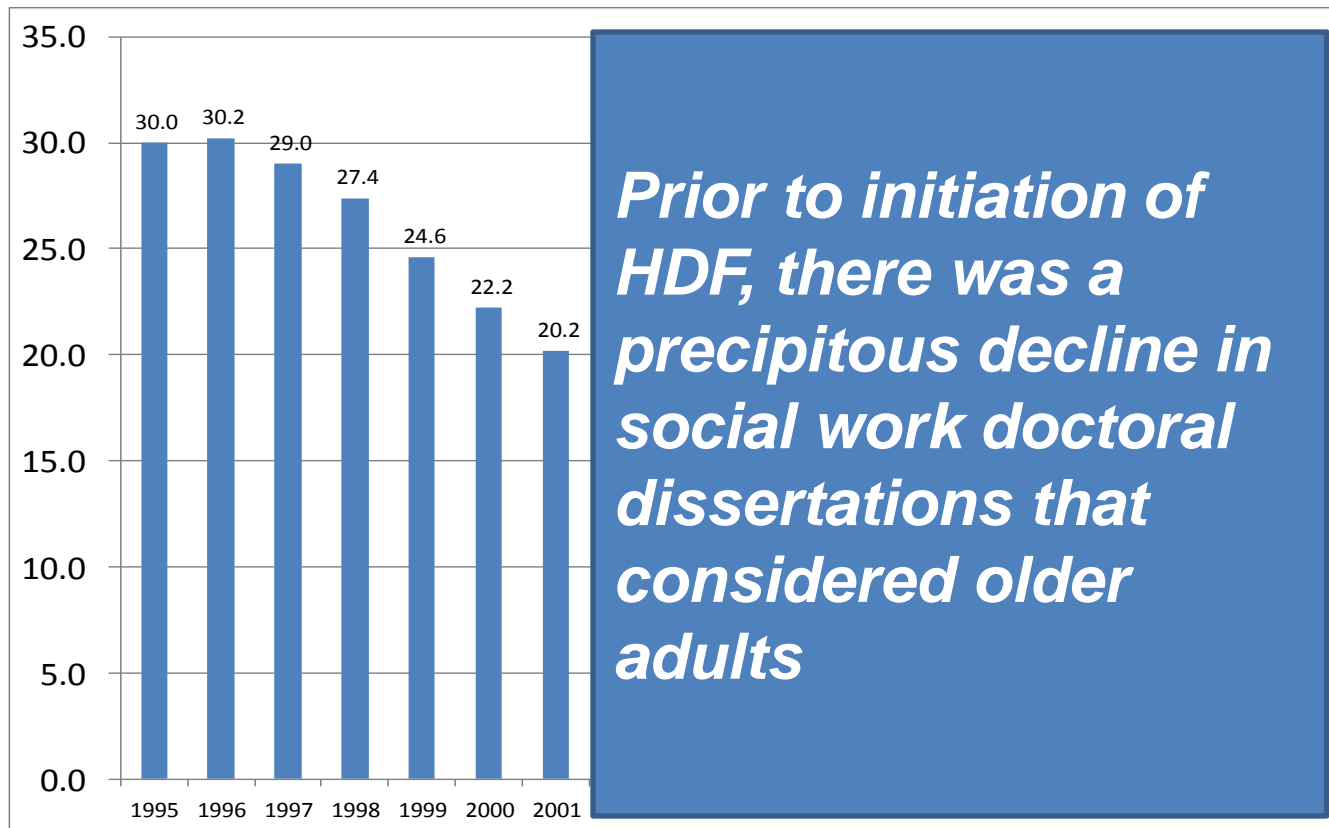
Sources:

U.S. Census Bureau. (2010). Population estimates. Retrieved May 5, 2010, from <http://www.census.gov/popest/estimates.html>.

U.S. Census Bureau. (2013). National population projections. Retrieved June 19, 2013, from <http://www.census.gov/population/projections/data/national/2012/summarytables.html>.



Rolling 5 Year Average of Social Work Dissertations in Aging 1995 - 2001



Hartford Doctoral Fellowship:

- ✓ *Dissertation grants: \$50,000 over 2 years*
- ✓ *Travel expenses to attend GSA & CSWE*
- ✓ *Supplemental academic career guidance*
- ✓ *Peer networking & Community building*
- ✓ *Pre-conference workshops & periodic webinars to foster professional development*



NOTE: The Fellow's university provided a \$20,000 match. Thus the estimated value of a Hartford Doctoral Fellowship was over \$84,000!



HDF Workshops & Webinars

(Sample Topics)

- ✓ Demystifying the Academic Job Market
- ✓ Handling the Many Conversations
- ✓ The Job Talk as a Communications Challenge
- ✓ Transitioning from Student to Faculty Member
- ✓ Publishing
- ✓ Teaching
- ✓ Getting Tenure



History of Applications to HDF

	HDF Applicants	Fellows Selected	Selection Rates
HDF Cohort I (2001)	17	7	41%
HDF Cohort II (2002)	7	2	29%
HDF Cohort III (2003)	23	7	30%
HDF Cohort IV (2004)	19	11	58%
HDF Cohort V (2005)	16	10	62%
HDF Cohort VI (2006)	28	17	61%
HDF Cohort VII (2007)	25	15	60%
HDF Cohort VIII (2008)	18	9	50%
HDF Cohort IX(2009)	19	6	32%
HDF Cohort X (2010)	26	8	31%
HDF Cohort XI (2011)	27	12	44%
Totals	225	104	46%



HDF Pre-Dissertation Awards

- *Travel grant to attend GSA & preconference workshops*
- *Four cohorts of 20 PDAs in 2005 -2008*
- *Total of 80 PDAs from 44 universities & 24 states*
- *44% of PDAs were later chosen to become HDFs*
- *PDA program increased applicant pool for the HDF program*



NOTE: AGE-SW has continued the PDA program



SW Educational Institutions by Carnegie Classification

	<i>Number</i>	<i>High or VH Research University</i>	<i>Other Type of University</i>
CSWE BSW	492	19%	81%
CSWE MSW	231	44%	56%
GADE Doctoral	73	85%	15%
Where HDF trained	104	97%	3%



Hartford Doctoral Fellows

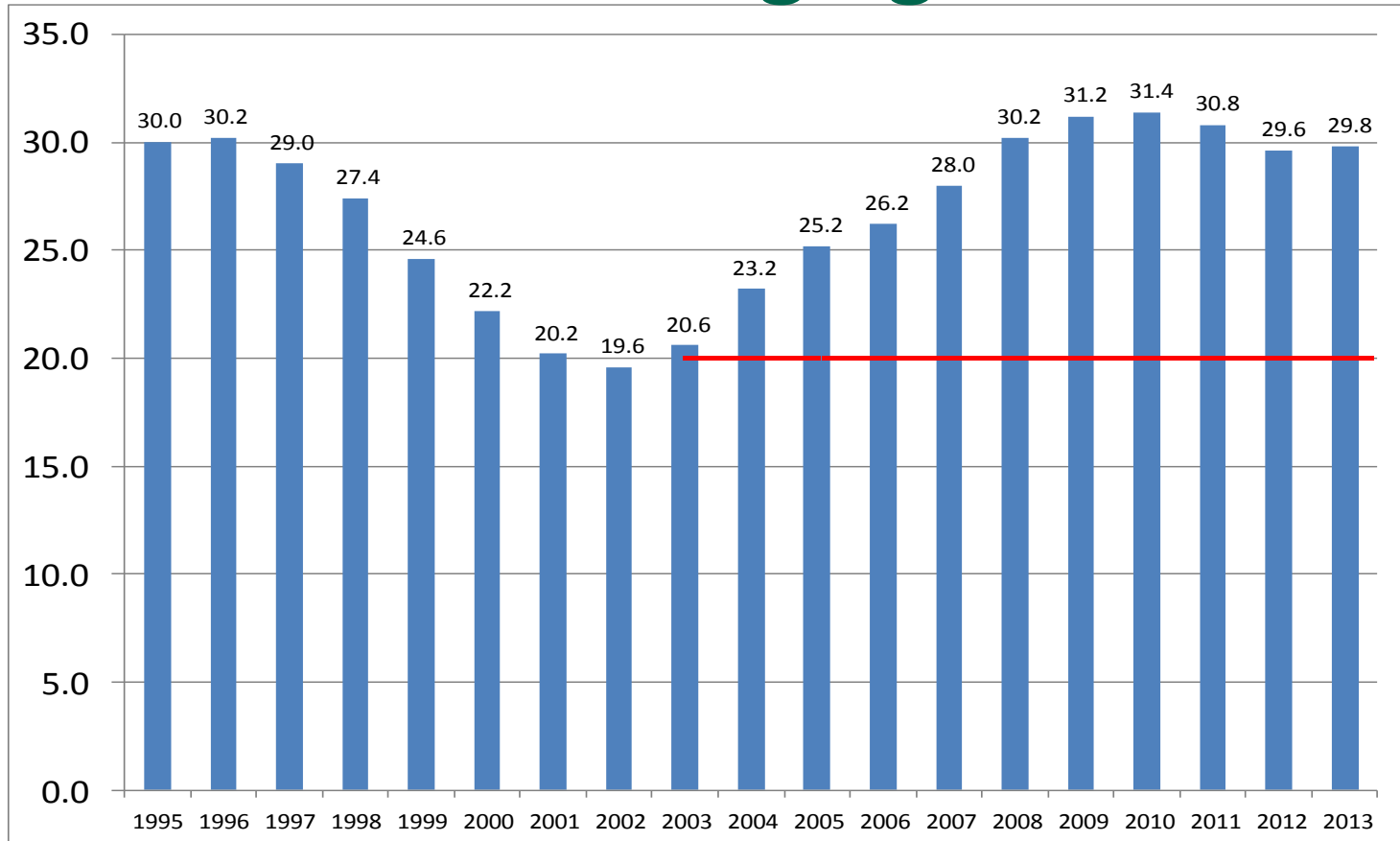
Accomplishments of 2002-2013 Graduates

Dissertations filed 2002 -2013	HDF	All other GSW PhDs	
N (<i>Unduplicated count</i>)	101	252	29%
Hold Tenure-Track Faculty Appointment in a CSWE MSW Program	50%	22%	2x
Hold Tenure-Track Faculty Appointment in a GADE Doctoral Program	42%	8%	5x
Hold Tenure-Track Faculty Appointment in a Carnegie Research Intensive Univ.	44%	13%	3x
Hold Tenure-Track Faculty Appointment in a Non-Research Intensive Univ.	15%	23%	.7x
Selected as Hartford Faculty Scholar	27%	5%	5x





Rolling 5 Year Average of Social Work Dissertations in Aging 1995 - 2013



HDF was major factor contributing to increased production of geriatric social work PhDs!



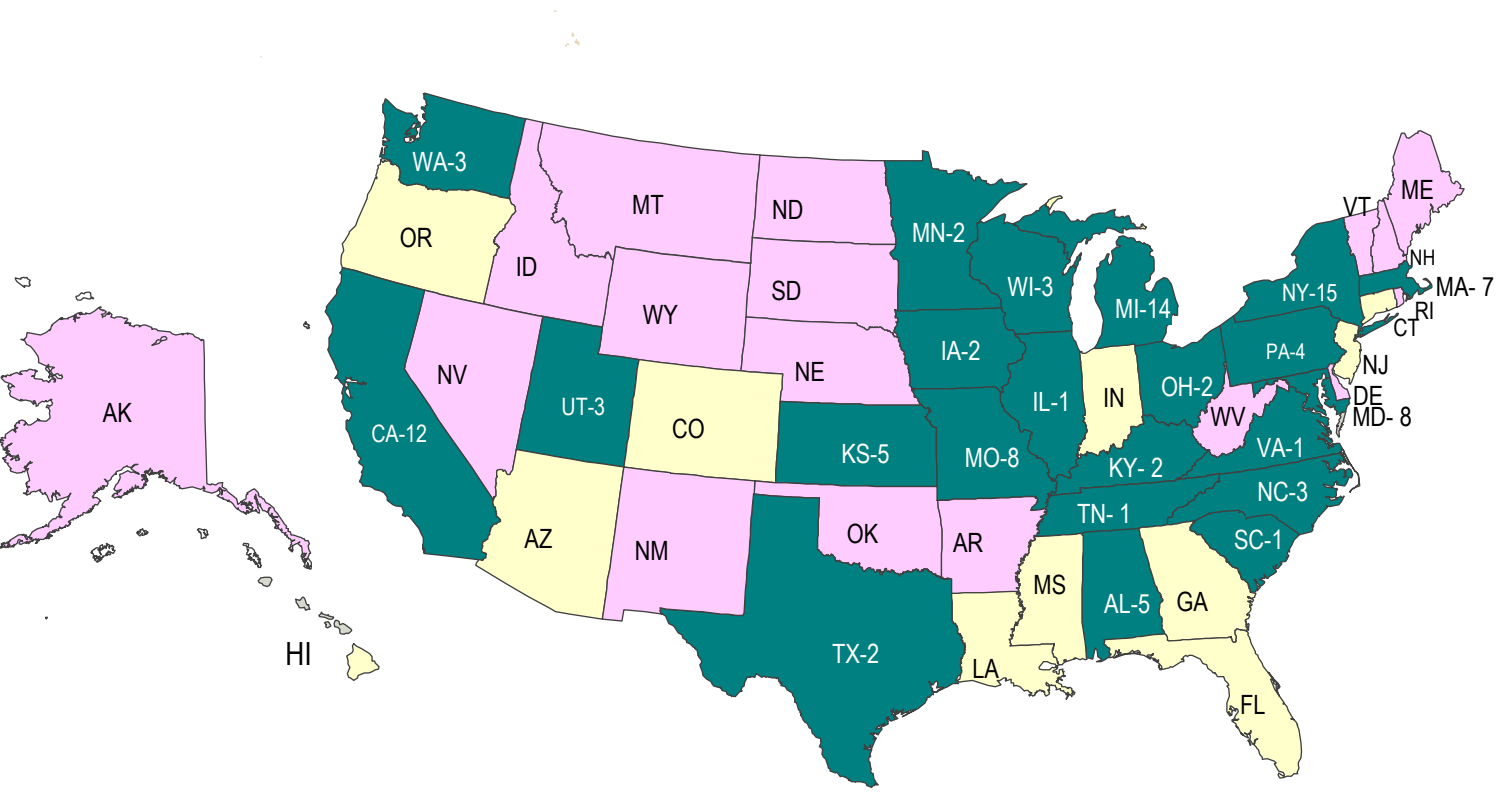
Trends in Geriatric Social Work Faculty in GADE Schools

	<u>2005</u> (% HDF)	<u>2013</u> (% HDF)
<i>Professor</i>	65 (0%)	88 (0%)
<i>Assoc Prof</i>	48 (0%)	77 (16%)
<i>Asst Prof</i>	51 (18%)	55 (60%) ←
<i>Clinical/Adjunct</i>	7 (0%)	9 (22%)
<i>Total</i>	171 (5%)	229 (21%) ←

Note: In 2013, an additional 17 HDFs held faculty appointments in Non-GADE schools

GERIATRIC SOCIAL WORK INITIATIVE

104 Hartford Doctoral Fellows
From 22 States and 36 Universities



Top Universities for HDF

Michigan (12)

Maryland (8)

Columbia (7)

UC Los Angeles (6)

Washington (MO) (6)

Boston College (5)

Kansas (5)

Alabama (4)

UC Berkeley (4)

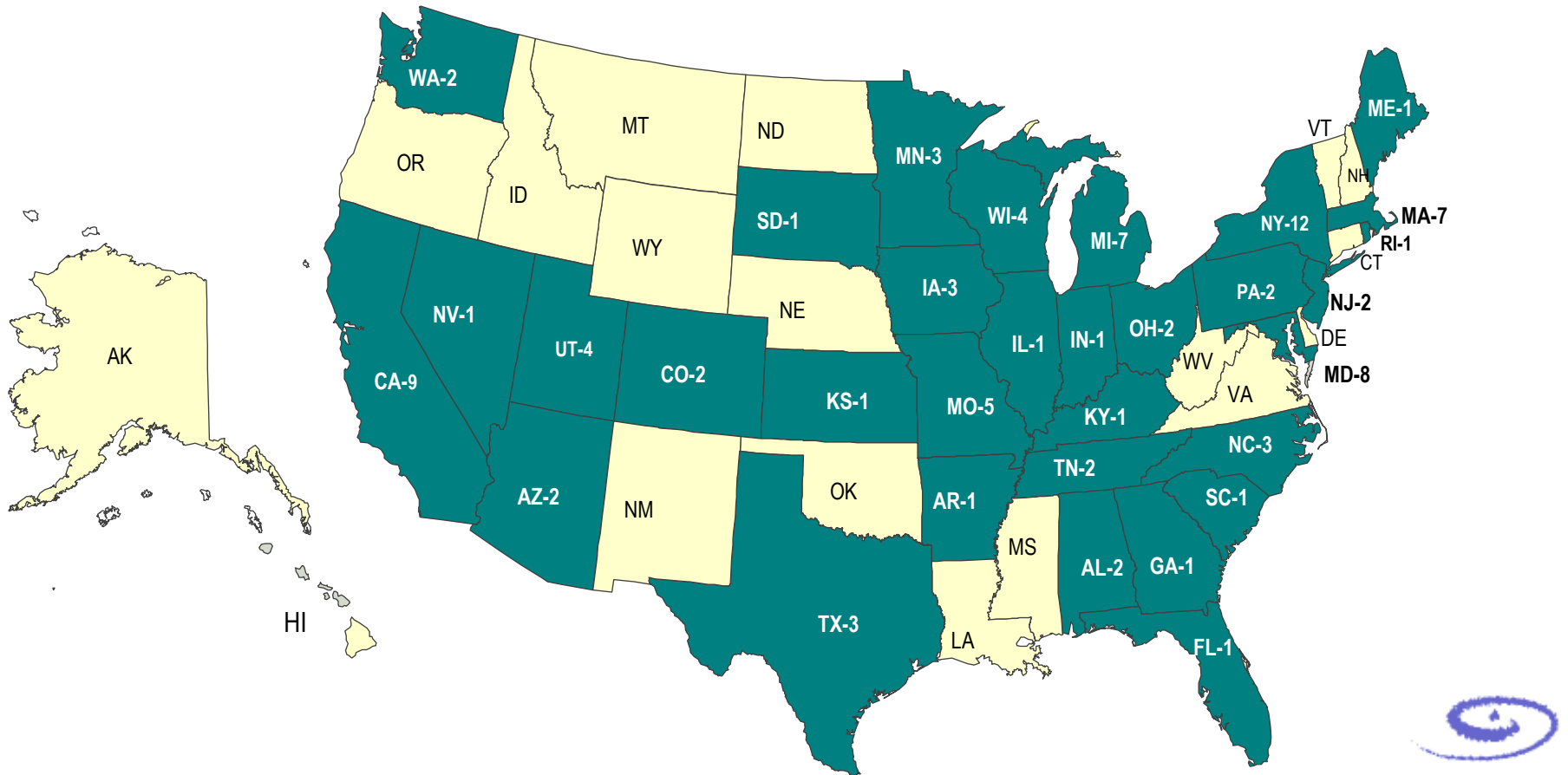
NOTE: Pink indicates states without doctoral programs

**29 Hartford Doctoral Fellows became
Hartford Faculty Scholars**



Where are 104 Hartford Doctoral Fellows Now?

Active in 32 States and 4 Countries



Where are the 104 Hartford Doctoral Fellows employed?

- **63 Fellows are teaching in CSWE Accredited programs**
 - 33 in universities with GADE Programs
 - 43 in universities with MSW Programs
 - 36 in universities with BSW Programs
- **11 in non-CSWE programs**
- **10 in research positions**
- **10 in practice positions**
- **8 in post-doctoral fellowships or recent graduates**



GADE Programs hired 33 Hartford Doctoral Fellows

Adephi	Iowa	South Carolina
Alabama	Kansas	SUNY – Albany
Arizona State	Maryland	SUNY – Buffalo
Boston College	Michigan	Tennessee
Boston University	Michigan State	Texas – Arlington
CUNY – Hunter	Minnesota	Texas – Austin
Denver	Missouri	Utah
Florida State	NYU	Wayne State
Georgia	Ohio State	Wisconsin – Madison
Houston	Rutgers	Wisconsin – Milwaukee
Indiana	Simmons	USC



Other CSWE Programs that hired Hartford Doctoral Fellows

Arkansas Pine Bluffs

Cal State – Long Beach

CUNY – Lehman

East Carolina

Eastern Washington

Missouri – St Louis

Missouri State

Nevada – Las Vegas

North Carolina – Wilmington

South Dakota

Wisconsin – Whitewater



Hartford Doctoral Fellows Program Demonstrates Continued Success

- ✓ ***JAHF funding for HDF exceeded \$11 million!***
- ✓ ***This funding enabled 104 Hartford Doctoral Fellows and 80 HDF Pre-Dissertation Awards!***
- ✓ ***The HDF alumni are important components of the infrastructure that continues to enable expansion of geriatric social work education!***
- ✓ ***For example, 60% of Assistant Professors in GADE schools with expertise in aging are former HDFs!!***

**Today's Doctoral Students are ...
Tomorrow's Social Work Faculty!**



