

AI and Me: Personal Reflections on the Next Era of Health Research

Ruopeng An, PhD, FACE, FAAHB
Associate Professor, Brown School

 Washington University in St. Louis



AI Against Me



- From east to west
- “Conventional” quantitative social science methods
- A non-binary social scientist

Me On AI



- 2 AI certificate programs
- 5 AI courses
- “AI in the Social Sciences” Open Classroom series
- AI interest group with 30+ graduate students
- Graduates landing data scientist positions

Me With AI

- From “for” to “with”
- Human-machine partnership



Coding & Debugging



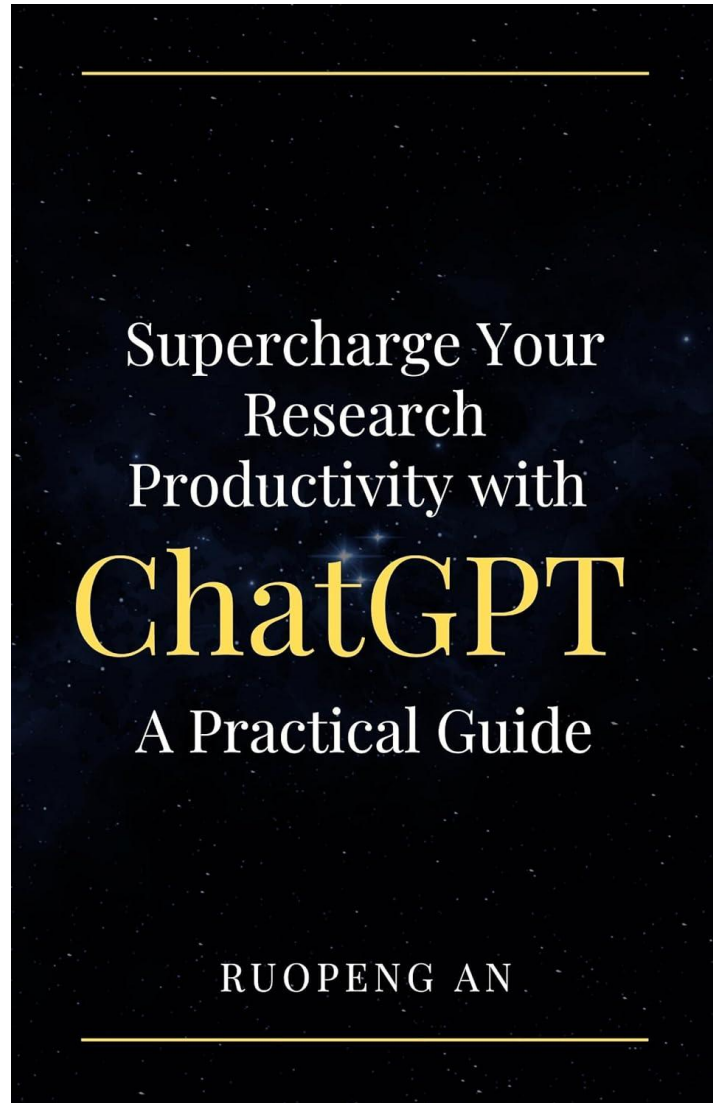
Literature Summarization



Data Extractions



A Book of Experiment



1. Identify research ideas
2. Formulate research hypotheses
3. Undertake literature reviews
4. Select research design
5. Develop research instruments
6. Handle data collection and management
7. Analyze quantitative and qualitative data
8. Draft research papers and reports
9. Address peer review comments
10. Disseminate study findings



My Research Using AI



Fight Against Exaggerations in News

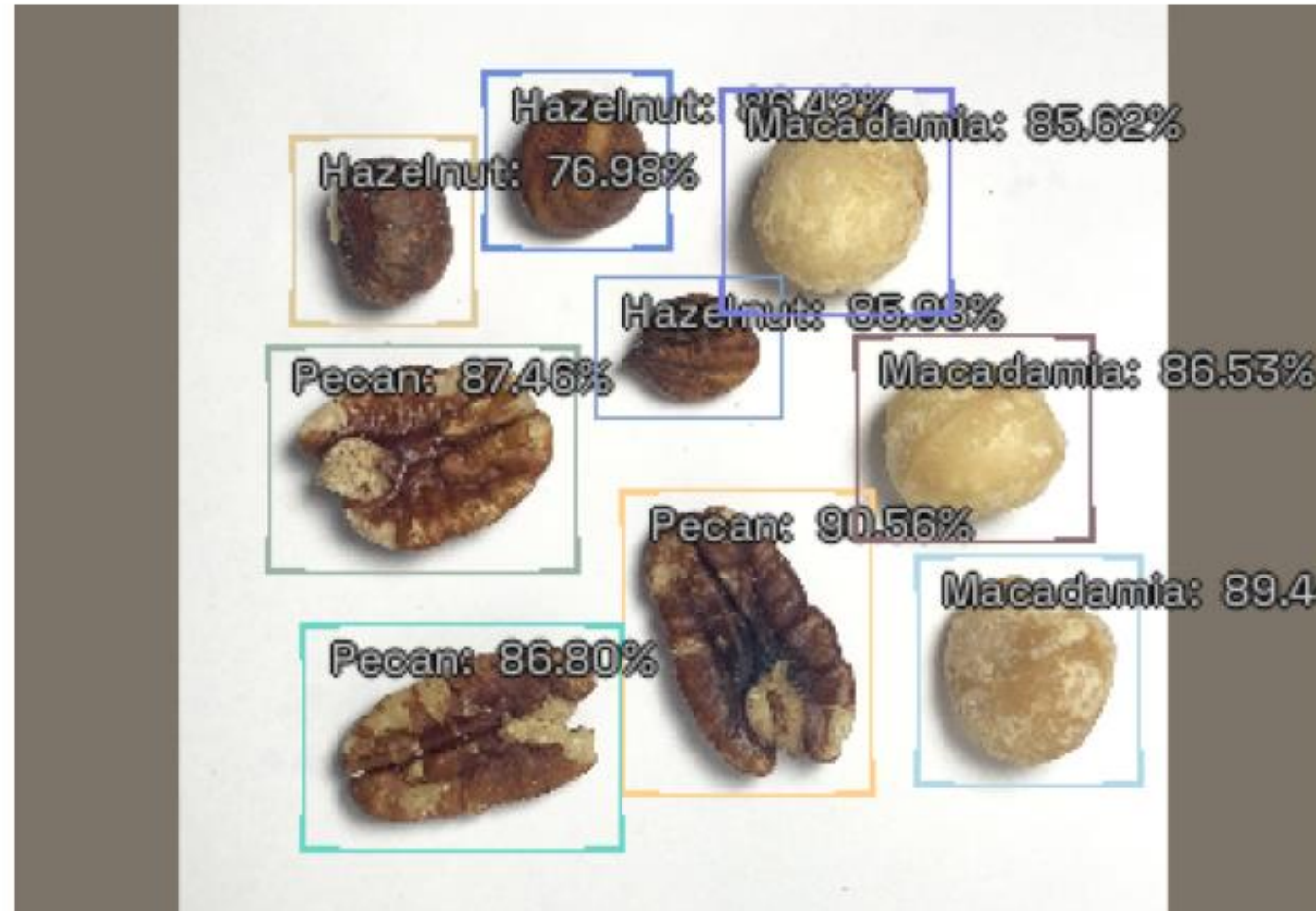


- Original: “Yogurt contributing to obesity epidemic, study claims”
- Model-revised: “Most yogurt products in UK have too much sugar to be considered healthy”

Estimate Nutritional Value from Nut Consumption



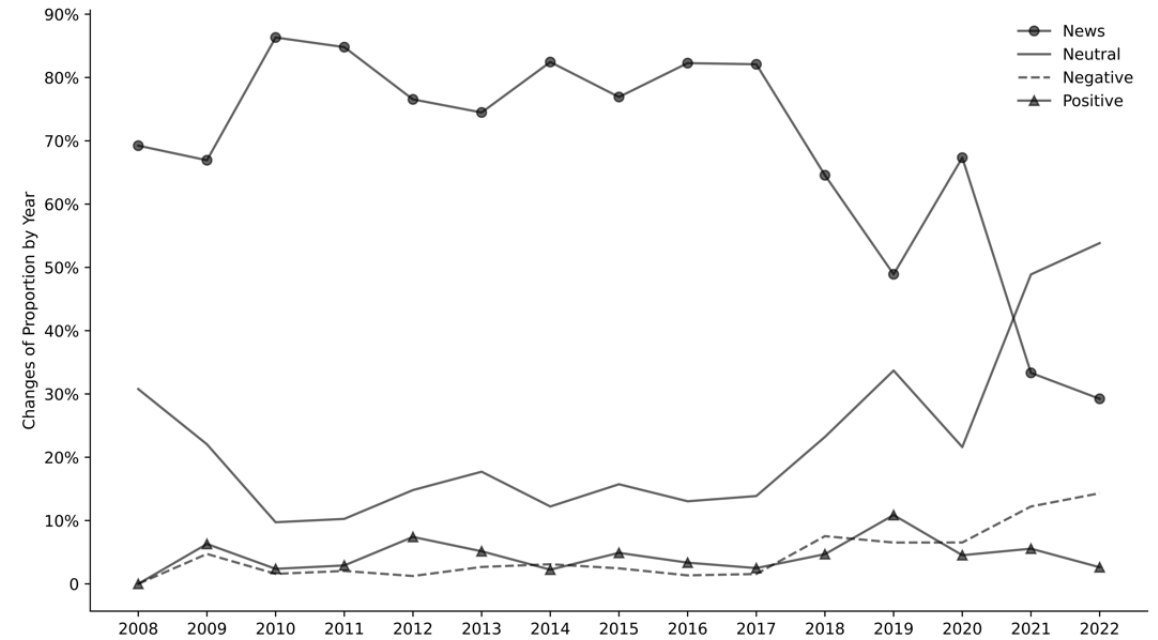
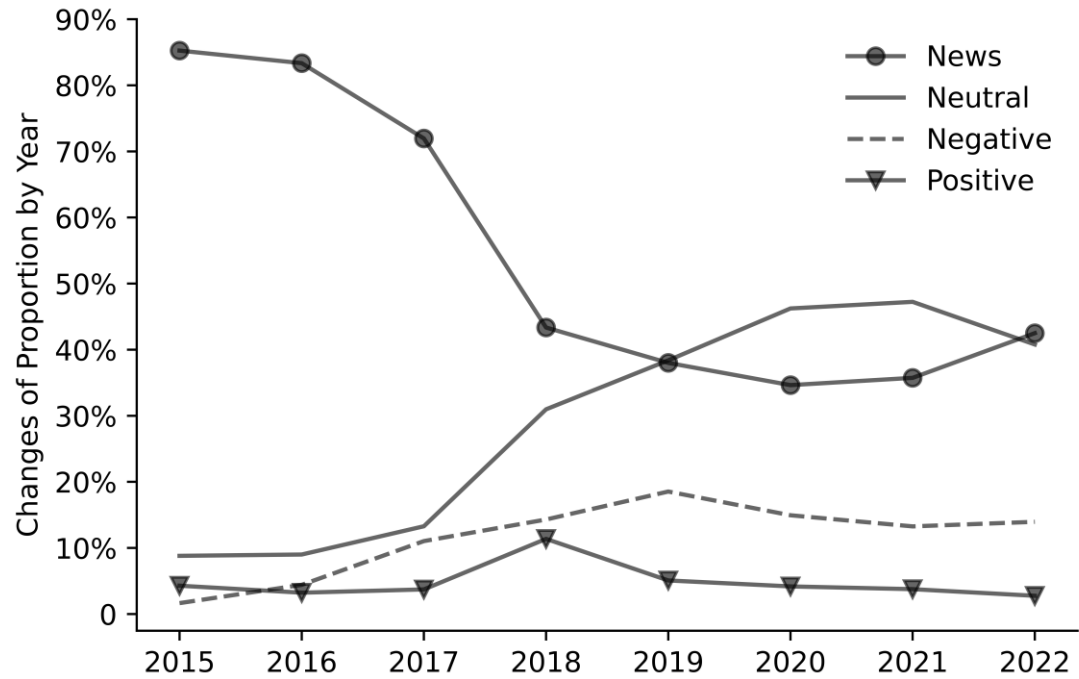
Prediction



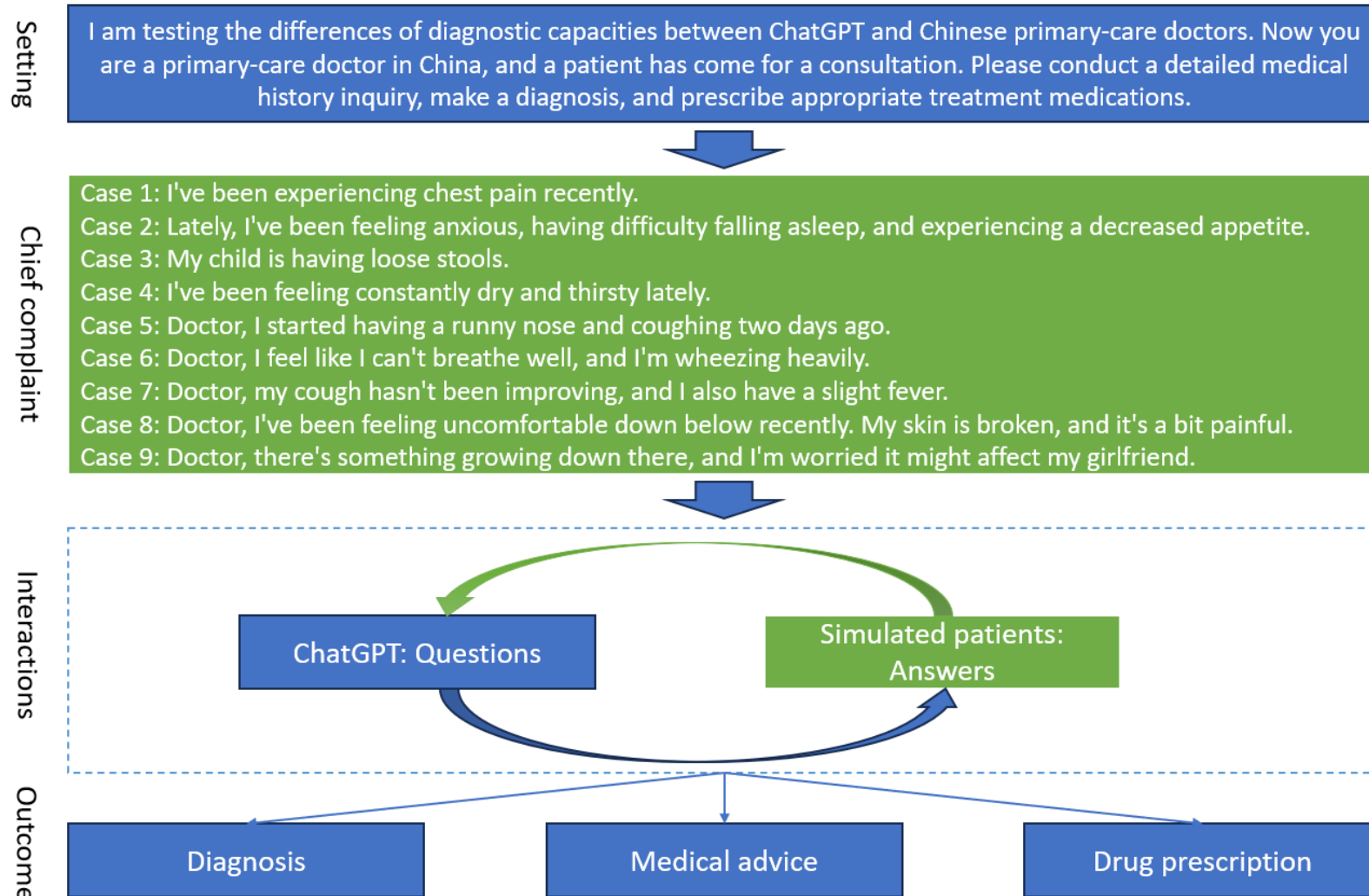
Predict Obesity with Self-reported Height & Weight



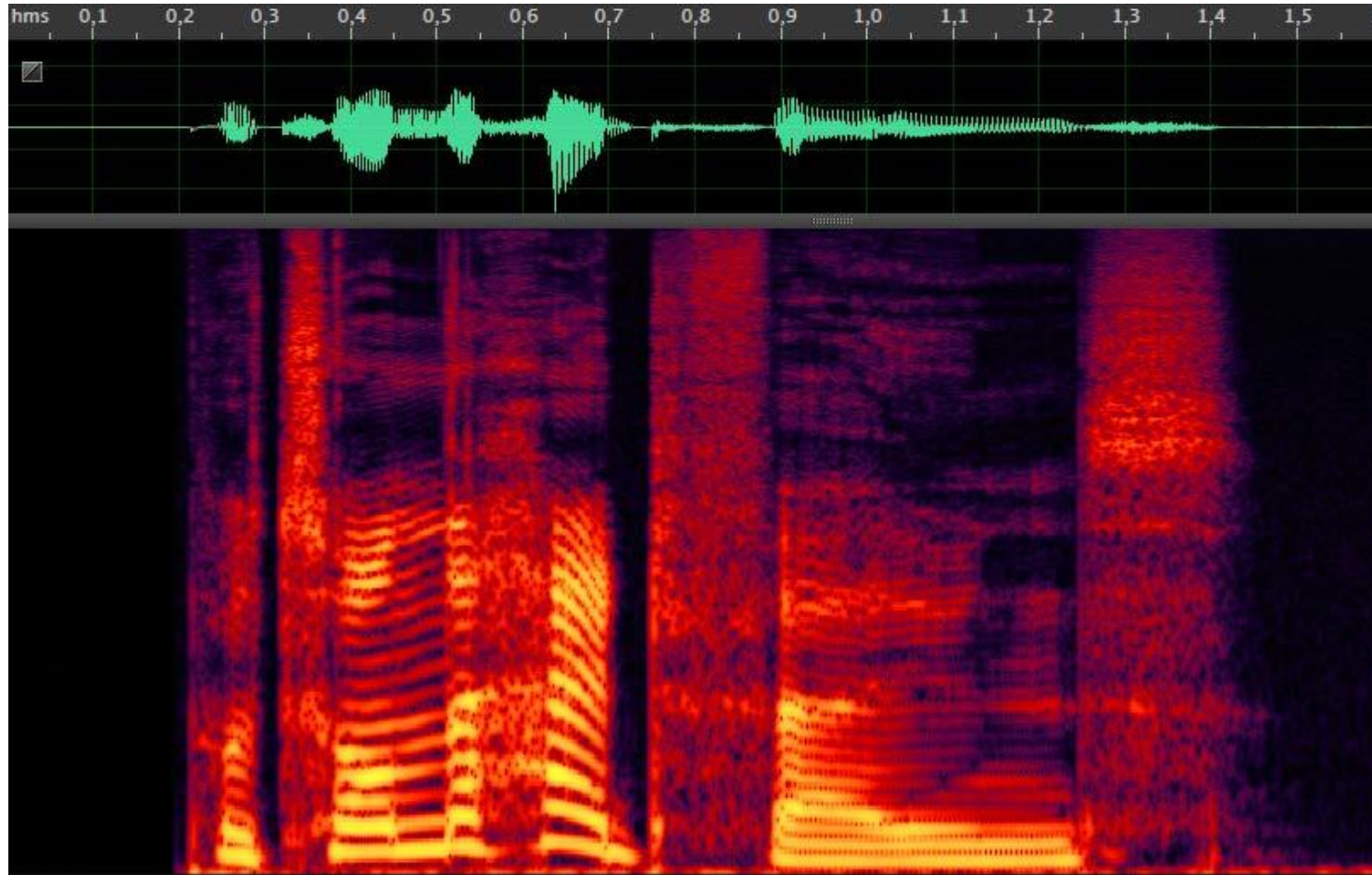
Track Sentiments Towards Health Policies



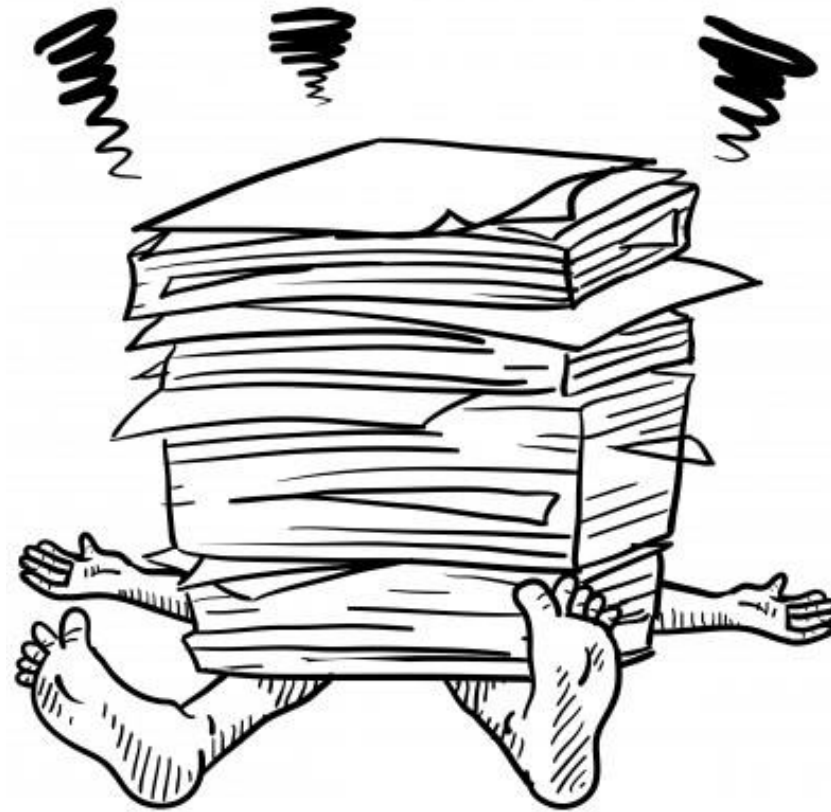
Evaluate ChatGPT's Medical Diagnosis Capacity



Predict Obesity with Voices



Qualitative Data Analysis



AI & Data Science Learning Resources at Brown School

Ruopeng An, PhD, FACE, FAAHB
Associate Professor, Brown School

 Washington University in St. Louis



Upcoming Talk on Zoom



 Washington University in St. Louis
BROWN SCHOOL

SEARCH

Academics

Faculty & Research

Resources & Initiatives

News

Life at Brown

Open Classroom | Bridging Bytes & Bonds: The AI Transformation in Social Work

📅 Tuesday, November 14, 2023

🕒 12:30 am - 1:30 pm, Central, Virtual

[**Register here**](#)



AI in the Social Sciences Open Classroom Series



[Write Effective ChatGPT Prompts to Boost Research Productivity \(Part I\) – YouTube](#)

[Write Effective ChatGPT Prompts to Boost Research Productivity \(Part 2\) - YouTube](#)

[Super-intelligence, Frankenstein, and Post-humanism: AI Ethics Beyond Data and Algorithmic Bias - YouTube](#)

[Applications of AI and Big Data Analytics in Obesity Research - YouTube](#)

[Artificial Intelligence: Implications for Social Equity and Bias – YouTube](#)

[Artificial Intelligence For Everyone – YouTube](#)

[Artificial Intelligence: Applications, Promises, Pitfalls, and Misperceptions - YouTube](#)

Online Advanced Certificate Program



 Washington University in St. Louis
BROWN SCHOOL

Academics

Faculty & Research

Resources & Initiatives

BROWN SCHOOL › RESOURCES & INITIATIVES › ADVANCED LEARNING CERTIFICATE › ARTIFICIAL INTELLIGENCE



Artificial Intelligence Applications for Health Data

[Sign up here](#)